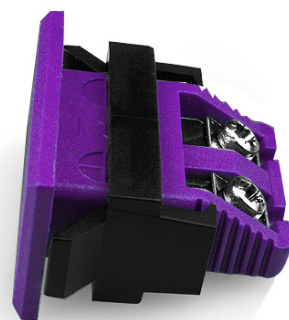
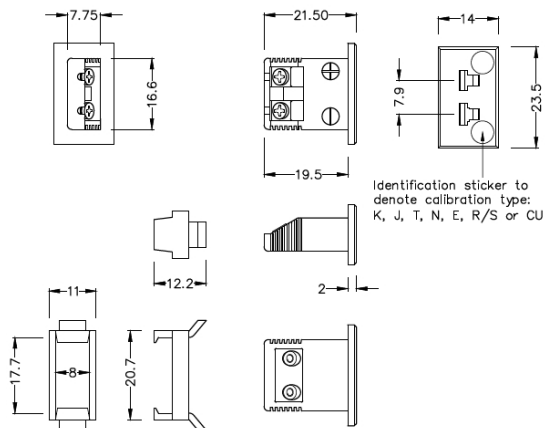


Connettore termocoppato a presa rettangolare a faccia in miniatura JM-E-FF Tipo E JIS



Miniature Fascia Socket (with nylon mounting clip)
(dimensions in mm)

Labfacility are the UK's leading manufacturer of Temperature Sensors, Thermocouple Connectors and associated Temperature Instrumentation and stockings of Thermocouple Cables. The Company has been trading since 1971 and is ISO9001 accredited.

Miniatura Rettangolare Termocouple Connettore Fascia Socket JM-E-FF Tipo E JIS

Clip in nylon per una correzione rapida e semplice al pannello. Tutte le prese di montaggio della fascia sono polarizzate da perni di dimensioni ineguali

Indicazioni**Specifications**

Product Code	XE-9237-001
General Description	All fascia mounting sockets are polarised by means of unequally sized pins
Thermocouple Type	E JIS
Connector Type	Fascia mounting socket
Connector Size	Miniature
Colour	Violet
Max. Temperature	120°C
+Positive Contact	Nickel Chromium
-Negative Contact	Copper Nickel
Standards Met	BS EN 50212:1997. RoHS