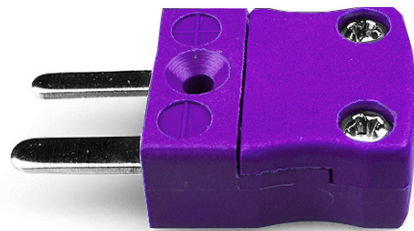


Connettore termocoppia in miniatura Plug JM-E-M Tipo E JIS



Miniature in-line Plug
(dimensions in mm)



Labfacility are the UK's leading manufacturer of Temperature Sensors, Thermocouple Connectors and associated Temperature Instrumentation and stockings of Thermocouple Cables. The Company has been trading since 1971 and is ISO9001 accredited.

Connettore termocoppia in miniatura Plug JM-E-M Tipo E JIS

Con perni piatti per soddisfare il tipo di termocoppia e ideale per l'uso di uso generale, tutti i contatti sono polarizzati per garantire una connessione corretta. Questi connettori accettano cavo termocoppia fino a 4 mm di diametro.

Indicazioni**Specifications**

| | |
|----------------------------|---|
| Product Code | XE-9230-001 |
| General Description | Ideal for general purpose use. Contacts are polarised to ensure correct connection. |
| Thermocouple Type | E JIS |
| Connector Type | Plug |
| Connector Size | Miniature |
| Colour | Violet |
| Max. Temperature | 220°C |
| Pins | Flat Pins |
| +Positive Contact | Nickel Chromium |
| -Negative Contact | Copper Nickel |
| Standards Met | BS EN 50212:1997. RoHS |