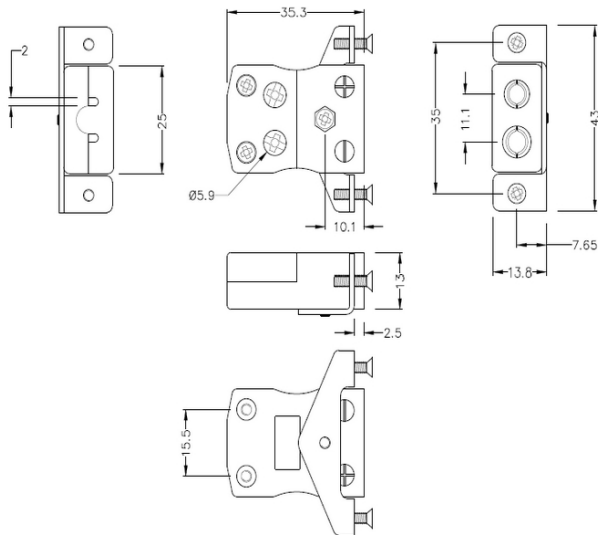
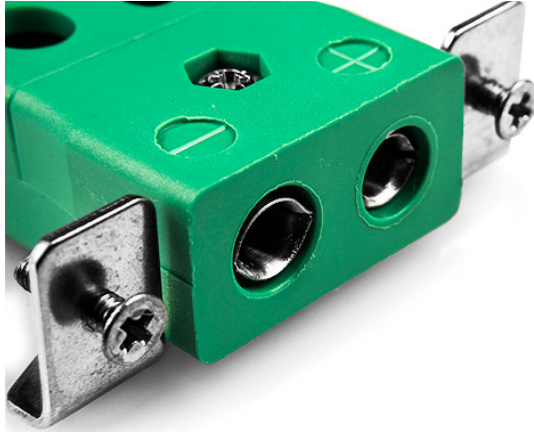
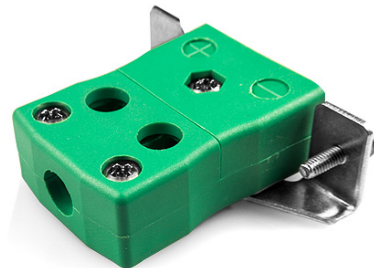


Montaggio standard del pannello a filo rapido con staffa in acciaio inossidabile AS-R/S-SSPFQ tipo R/S ANSI



Standard Socket - Quick Wire with stainless steel mounting bracket
(dimensions in mm)



Labfacility are the UK's leading manufacturer of Temperature Sensors, Thermocouple Connectors and associated Temperature Instrumentation and stockings of Thermocouple Cables. The Company has been trading since 1971 and is ISO9001 accredited.

Connettore termocoppiato di montaggio del pannello a filo rapido standard con staffa in acciaio inossidabile AS-R/S-SSPFQ tipo R/S ANSI

Destinato all'uso in processi più industriali, ma può essere utilizzato in tutte le applicazioni come desiderato. Facile connessione 'jab-in' per la terminazione rapida, basta spingere il filo e stringere la vite

Indicazioni**Specifications**

Product Code	XE-1619-001
General Description	Easy 'jab-in' connection for rapid termination, just push wire in and tighten screw
Thermocouple Type	R/S ANSI
Connector Type	Quick Wire Socket with SS Bracket
Connector Size	Standard
Colour	Green
Max. Temperature	220°C
+Positive Contact	Copper
-Negative Contact	Copper Alloy
Standards Met	BS EN 50212:1997. RoHS