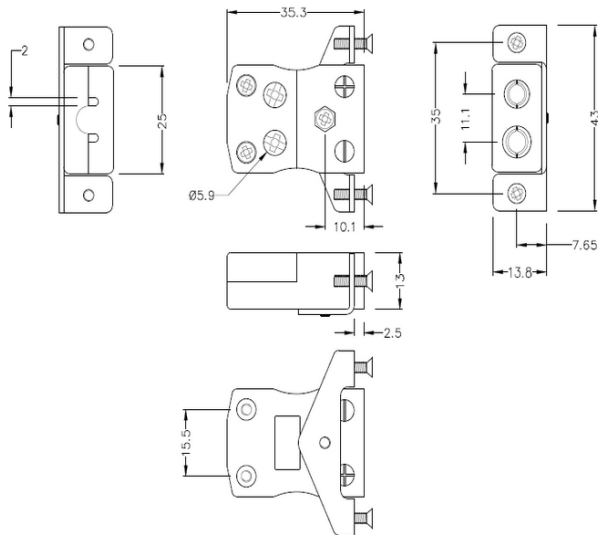
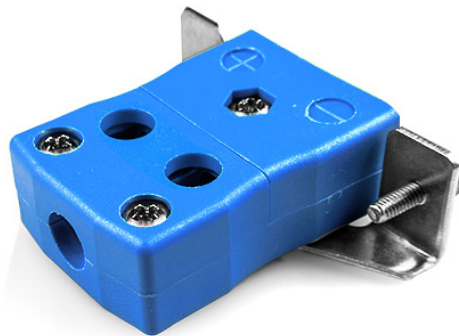
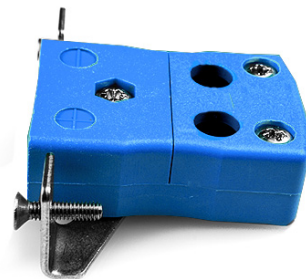


# Montaggio standard del pannello a filo rapido con staffa in acciaio inossidabile AS-T-SSPFQ tipo T ANSI



**Standard Socket - Quick Wire with stainless steel mounting bracket**  
(dimensions in mm)



Labfacility are the UK's leading manufacturer of Temperature Sensors, Thermocouple Connectors and associated Temperature Instrumentation and stockings of Thermocouple Cables. The Company has been trading since 1971 and is ISO9001 accredited.

**Standard Quick Wire Panel Connettore termocoppia di montaggio con staffa in acciaio inossidabile  
AS-T-SSPFQ tipo T ANSI**

Destinato all'uso in processi piu industriali, ma puo essere utilizzato in tutte le applicazioni come desiderato. Facile connessione 'jab-in' per la terminazione rapida, basta spingere il filo e stringere la vite

**Indicazioni****Specifications**

|                            |   |
|----------------------------|---|
| <b>Product Code</b>        | XE-1529-001   |
| <b>General Description</b> | Easy 'jab-in' connection for rapid termination, just push wire in and tighten screw |
| <b>Thermocouple Type</b>   | T ANSI  |
| <b>Connector Type</b>      | Quick Wire Socket with SS Bracket   |
| <b>Connector Size</b>      | Standard  |
| <b>Colour</b>              | Blue  |
| <b>Max. Temperature</b>    | 220°C   |
| <b>+Positive Contact</b>   | Copper  |
| <b>-Negative Contact</b>   | Copper Nickel   |
| <b>Standards Met</b>       | BS EN 50212:1997. RoHS  |