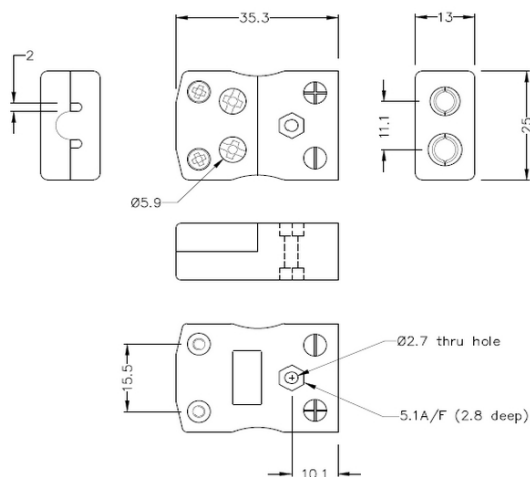
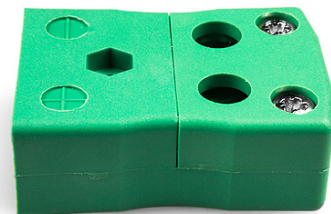


Standard Quick Thermocouple Connector Socket AS-R/S-FQ Tipo R/S ANSI



Standard in-line Socket - Quick Wire
(dimensions in mm)



Labfacility are the UK's leading manufacturer of Temperature Sensors, Thermocouple Connectors and associated Temperature Instrumentation and stockings of Thermocouple Cables. The Company has been trading since 1971 and is ISO9001 accredited.

Standard Quick Termcouple Connettore Socket AS-R/S-FQ Tipo R/S ANSI

Facile connessione 'jab-in' per la terminazione rapida, basta spingere il filo e stringere la vite. I contatti sono polarizzati per evitare un collegamento errato

Indicazioni**Specifications**

Product Code	XE-1622-001
General Description	Easy 'jab-in' connection for rapid termination, contacts are polarised to prevent incorrect connection.
Thermocouple Type	R/S ANSI
Connector Type	Quick Wire Socket
Connector Size	Standard
Colour	Green
Max. Temperature	220°C
+Positive Contact	Copper
-Negative Contact	Copper Alloy
Standards Met	BS EN 50212:1997. RoHS