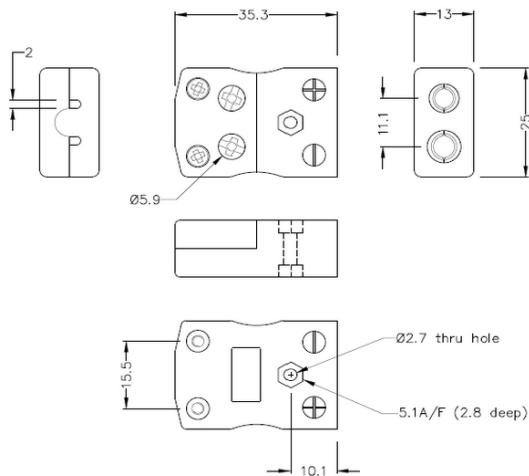


Connettore femmina per termocoppia a filo rapido standard FSCT-CU-FQ tipo Cu



Standard in-line Socket - Quick Wire
(dimensions in mm)



Labfacility are the UK's leading manufacturer of Temperature Sensors, Thermocouple Connectors and associated Temperature Instrumentation and stockings of Thermocouple Cables. The Company has been trading since 1971 and is ISO9001 accredited.

Connettore femmina per termocoppia a filo rapido standard FSCT-CU-FQTipo CU

Facile collegamento "jab-in" per una terminazione rapida, basta inserire il cavo e serrare la vite. I contatti sono polarizzati per evitare collegamenti errati

Indicazioni**Specifications**

Product Code	XE-1682-001
General Description	Easy 'jab-in' connection for rapid termination, contacts are polarised to prevent incorrect connection.
Thermocouple Type	IEC, ANSI, JIS Type CU
Connector Type	Quick Wire Socket
Connector Size	Standard
Colour	White
Max. Temperature	220°C
+Positive Contact	Copper
-Negative Contact	Copper
Standards Met	BS EN 50212:1997. RoHS