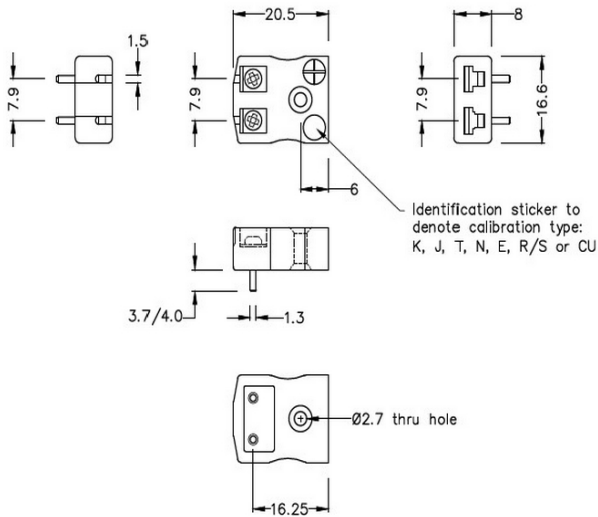
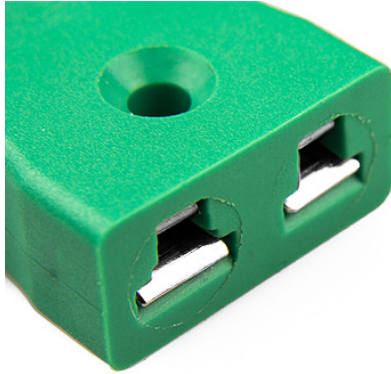


## Connettore per termocoppia di montaggio su PCB Socket IM-K-PCB Tipo K IEC



**Miniature PCB Socket**  
(dimensions in mm)



Labfacility are the UK's leading manufacturer of Temperature Sensors, Thermocouple Connectors and associated Temperature Instrumentation and stockings of Thermocouple Cables. The Company has been trading since 1971 and is ISO9001 accredited.

**Connettore per termocoppia di montaggio su PCB Socket IM-K-PCB Tipo K IEC**

Appositamente progettato per PCB, pin solidi per il montaggio diretto della scheda e predisposizione per sensore CJC

**Indicazioni****Specifications**

<b>Product Code</b>	XE-1109-001
<b>General Description</b>	Versatile, high quality circuit board mounting miniature socket
<b>Thermocouple Type</b>	K IEC
<b>Connector Type</b>	PCB Socket
<b>Connector Size</b>	Miniature
<b>Colour</b>	Green
<b>Max. Temperature</b>	220°C
<b>Pins</b>	Brass
<b>+Positive Contact</b>	Nickel Chromium
<b>-Negative Contact</b>	Nickel Alloy
<b>Standards Met</b>	BS EN 50212:1997. RoHS