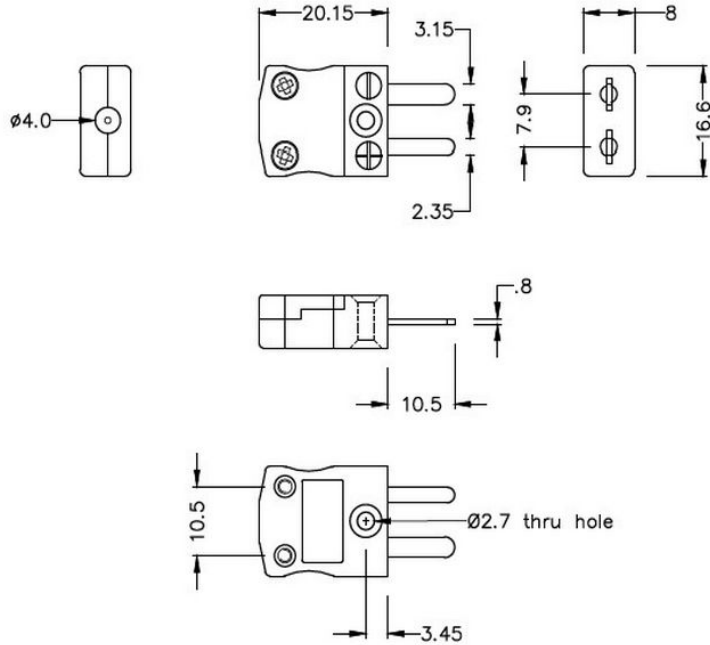
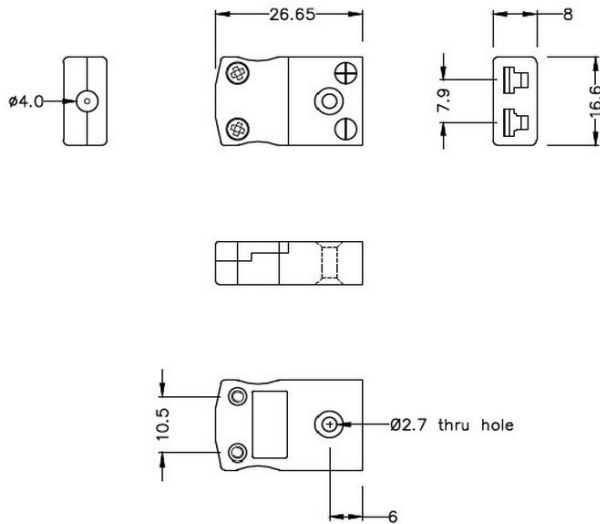


Connettore per termocoppia miniaturizzato Spina e presa IM-J-M + F Tipo J IEC



Miniature in-line Plug
(dimensions in mm)



Miniature in-line Socket
(dimensions in mm)



Labfacility are the UK's leading manufacturer of Temperature Sensors, Thermocouple Connectors and associated Temperature Instrumentation and stockings of Thermocouple Cables. The Company has been trading since 1971 and is ISO9001 accredited.

Connettore per termocoppia miniaturizzato Spina e presa IM-J-M + F Tipo J IEC

Con pin piatti adatti al tipo di termocoppia e ideali per l'uso generale, tutti i contatti sono polarizzati per garantire il corretto collegamento. Questi connettori accettano cavi a termocoppia fino a 4 mm di diametro.

Indicazioni**Specifications**

Product Code	XE-1000-001
General Description	Ideal for general purpose use. Contacts are polarised to ensure correct connection
Thermocouple Type	J IEC
Connector Size	Miniature
Connector Type	Plug & Socket
Colour	Black
Max. Temperature	220°C
Pins	Flat Pins
+Positive Contact	Iron
-Negative Contact	Copper Nickel
Standards Met	BS EN 50212:1997. RoHS