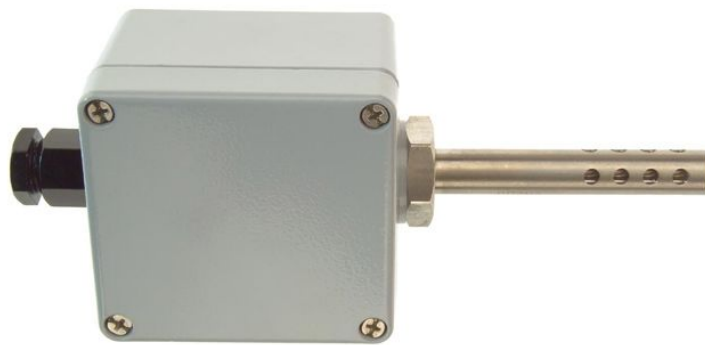


## Sensori di temperatura per celle frigorifere / da esterno Pt100 - Tipo PRT - Elemento singolo



Labfacility are the UK's leading manufacturer of Temperature Sensors, Thermocouple Connectors and associated Temperature Instrumentation and stockings of Thermocouple Cables. The Company has been trading since 1971 and is ISO9001 accredited.

Elemento singolo a 4 fili, che consente il collegamento a qualsiasi strumento Pt100 a 2, 3 o 4 fili.

Pt100 (100 Ohm @ 0C) secondo IEC 751, Classe B, elemento singolo a 4 fili

### Indicazioni

## Specifications

<b>Product Code</b>	XE-3673-001
<b>General Description</b>	Weatherproof IP67 rated wall mounting Pt100 for accurate outdoor air temperature sensing
<b>Sensor Type</b>	single element, Pt100 (100 Ohms @ 0°C) to IEC 751, Class B
<b>Housing</b>	Painted Die-Cast Aluminium Housing L80 x W74 x H54mm
<b>Element</b>	Pt100, class B to IEC 751
<b>Sheath Material</b>	Perforated 316 stainless steel probe, 12.7mm x 75mm
<b>Gland</b>	M20 cable entry gland
<b>Max. Temperature</b>	150°C
<b>Min. Temperature</b>	-50°C
<b>IP Rating</b>	IP67
<b>Transmitter</b>	Optional transmitter device has an ambient operating range of -40 to +85°C
<b>Number of Wires</b>	4
<b>Series</b>	Outdoor / Cold Store Pt100